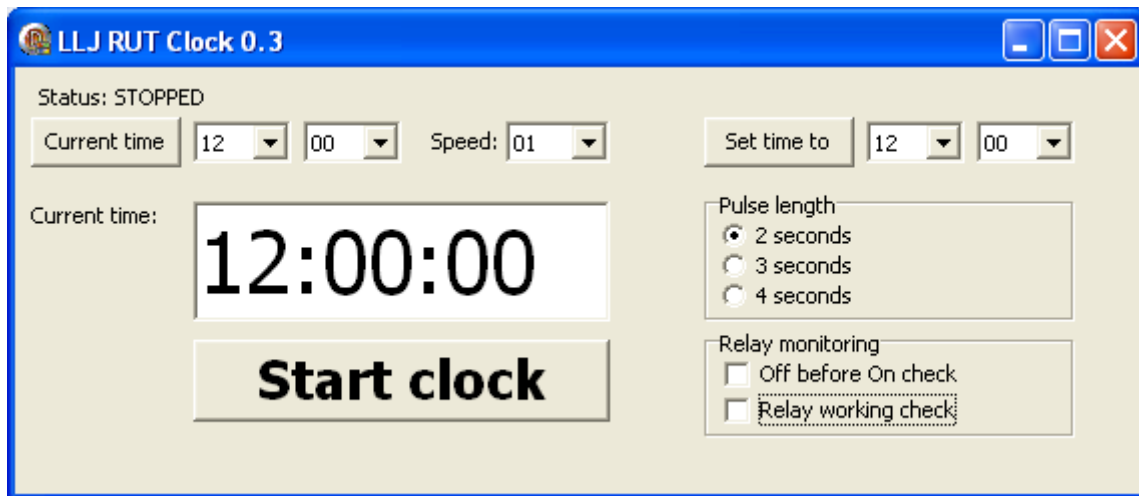


SETUP RUT CLOCK version 0.3



SETUP

1. Set all watches to a pre-determined time (example 12.00 a'clock) using the battery box or manually changing to the pre-determined time.
2. Unmark the checkbox fo :
"Off before On check"
" Relay working check"
2. Pulse length: Set to 3 sec (default 2 sec)
3. Set current time to the time wanted by changing the dragboxes for hour and minutes, then click the box "Curret time" (in example 12.00)
4. Set the speed of the time 01 – 15 x real time (normal are 4 – 6 time the real time).
5. Make sure all watches are connected via the 25 DSUB cables then thru the RUT box.

6. START TIME

Start the RUT time by click on the "Start clock" or by pressing the spacebar or use the manual knob on the cabinet.

7. STOPP TIME

Stopp the RUT time by click on the "Stopp clock" or by pressing the spacebar or use the manual knob on the cabinet.

SPEED STEPPING

To force all connected watches to a sertine time the speed step is used

1. Set the time that you want the system to step the watches to.
2. Select minimum 3 sec on the pulse length
3. Start speed stepping by pressing "Set time to". Now the software will take care of stepping all watches to the time set, the software stops automatically when the times is reached.